

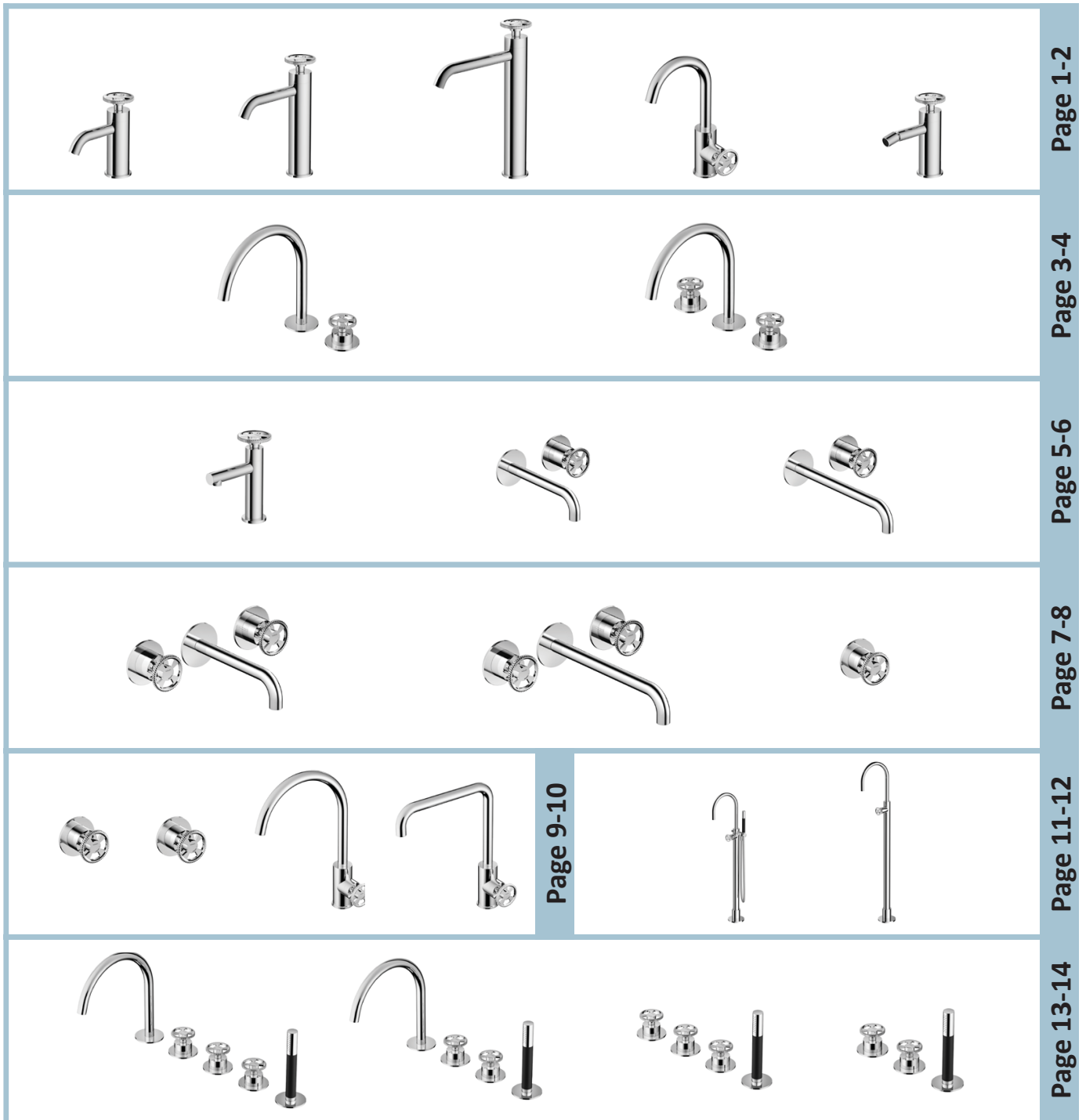
Cobber@Work

Bathroom and kitchen mixers
Mélangeurs pour bain et cuisine
Armaturen für Bad und Küche
Miscelatori per bagno e cucina

hotbath

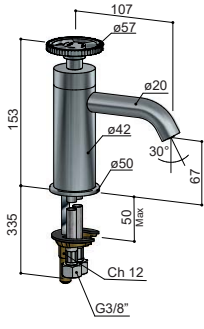
italian bathroomware

Hotbath Srl
Via Marco Polo 135/D • I-55049 • Viareggio • Italy
info@hotbath.it • www.hotbath.it

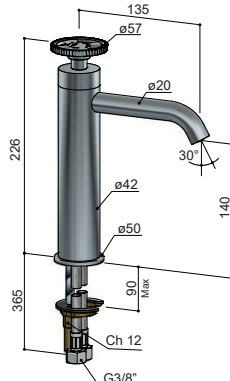


BEFORE STARTING / PRIMA DI INIZIARE / AVANT DE COMMENCER / VOR DEM START

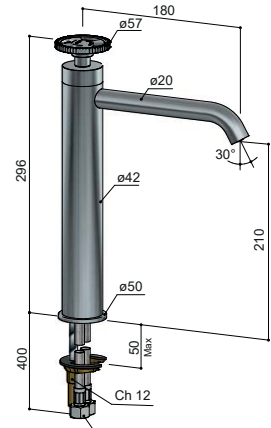
<p>P bar</p>	<p>MIN 1 MAX 5</p>	<p>1 3</p>	<p>ON OFF</p>	<p>15s</p>	<p>FILTER TAPS RECOMMENDED</p>
<p>T °C</p>	<p>MAX 80</p>	<p>45 60</p>			



CW003C

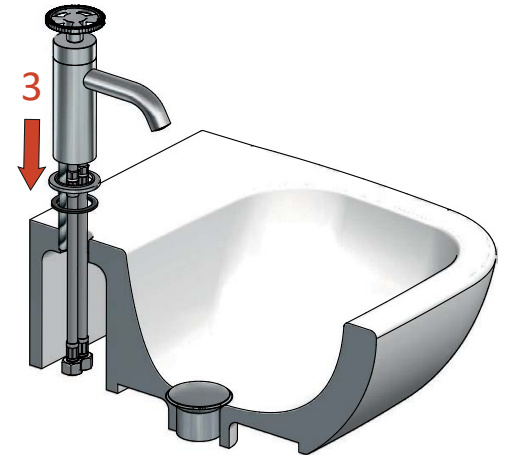
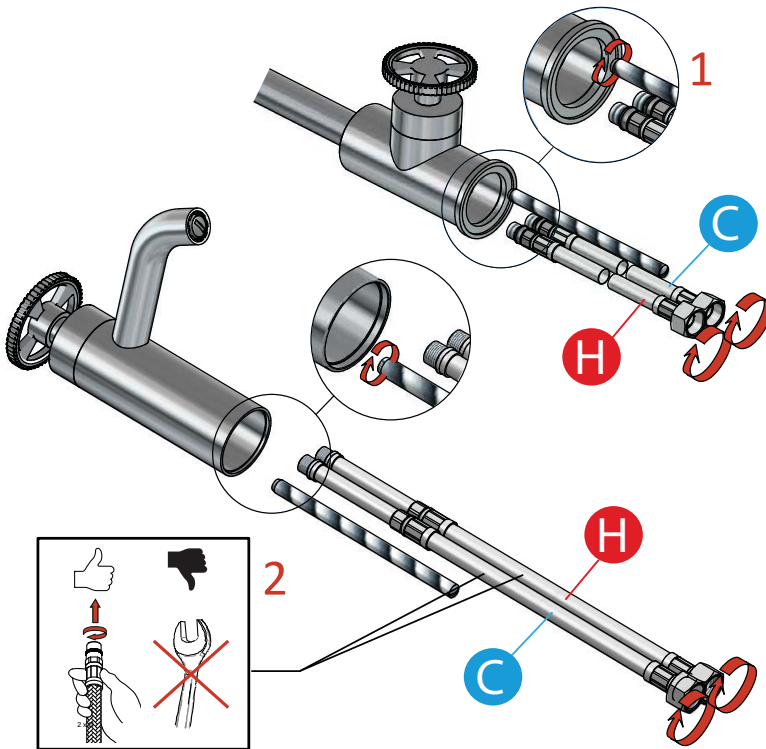


CW003MC

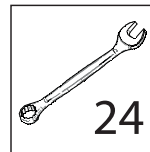
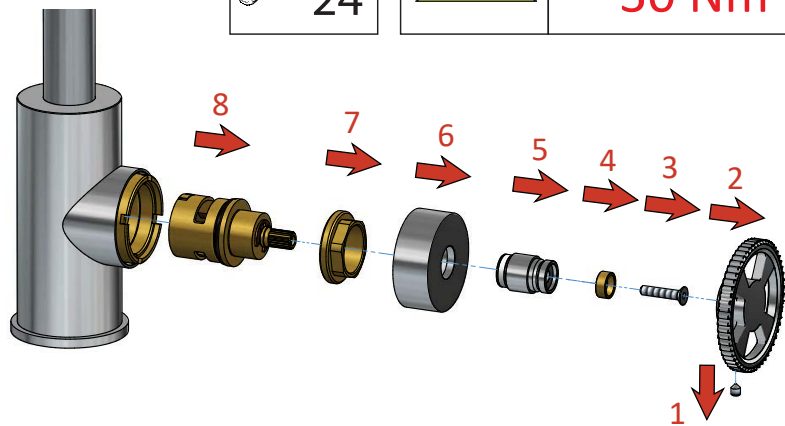
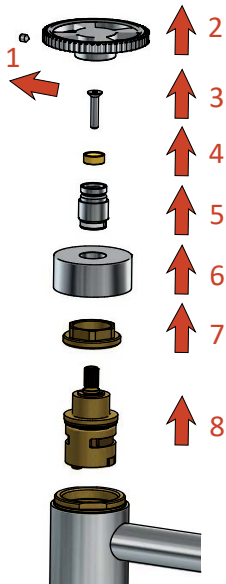


CW003HC

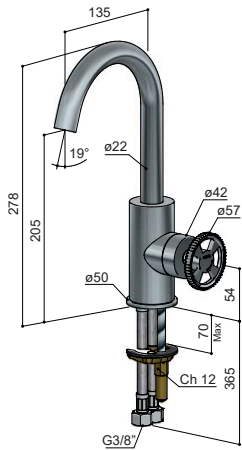
INSTALLATION



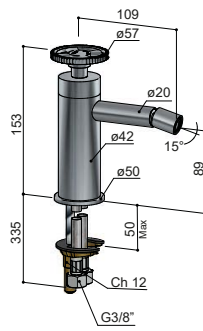
MAINTENANCE



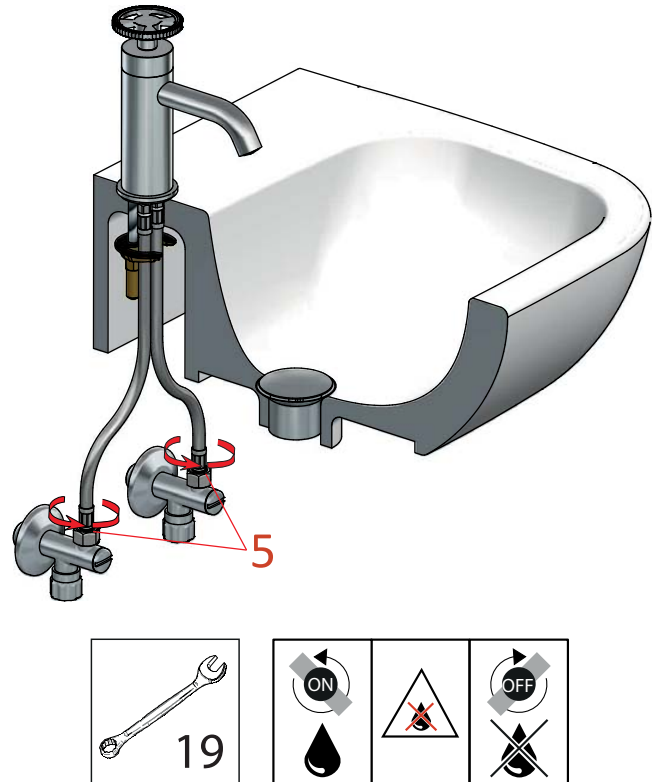
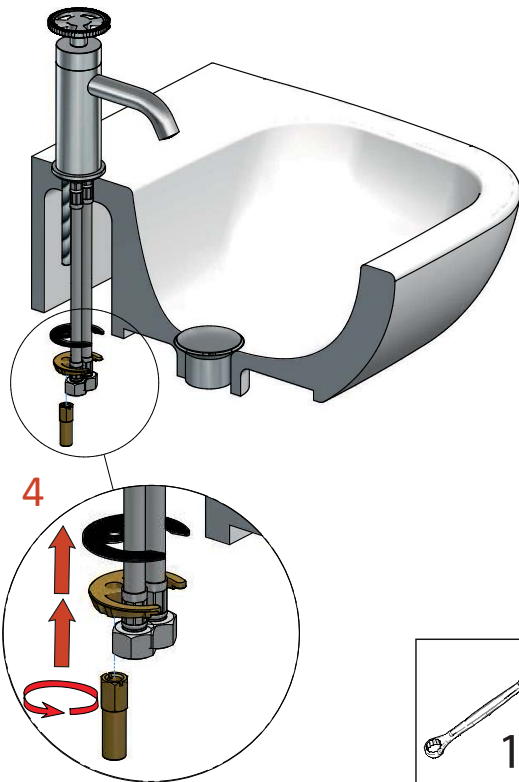
MAX TIGHTENING TORQUE
30 Nm

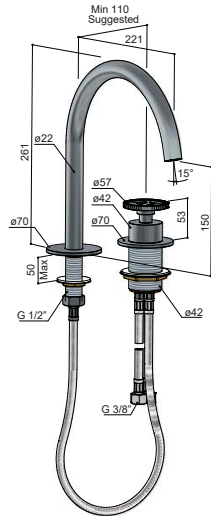


CW004

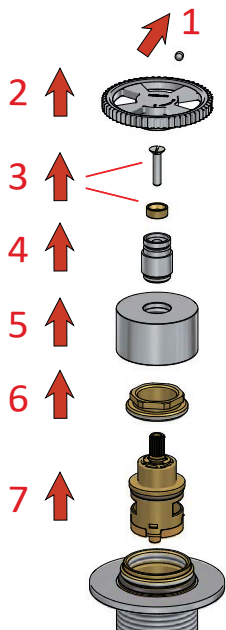
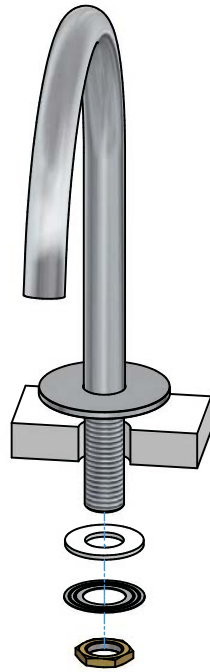
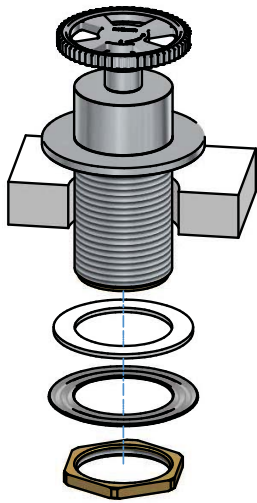


CW018





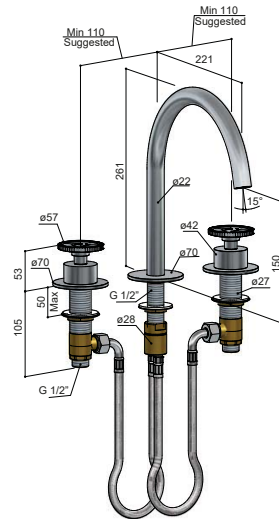
CW023



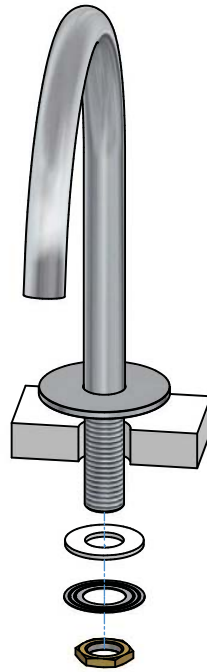
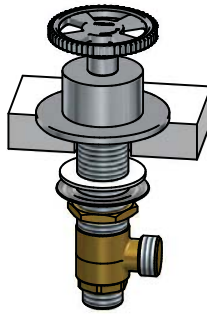
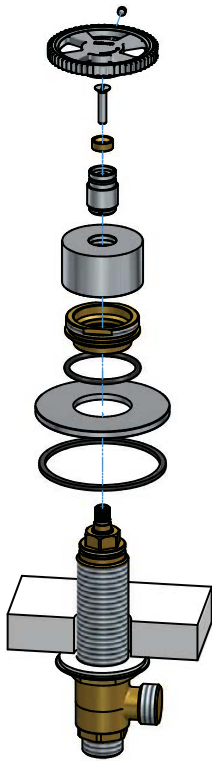
	<p>MAX TIGHTENING TORQUE 30 Nm</p>
<p>24</p>	



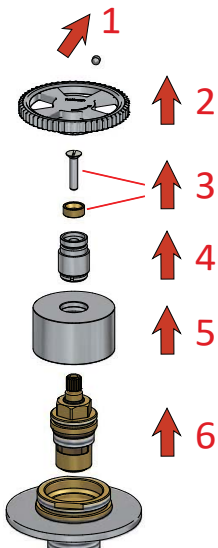
INSTALLATION



CW033

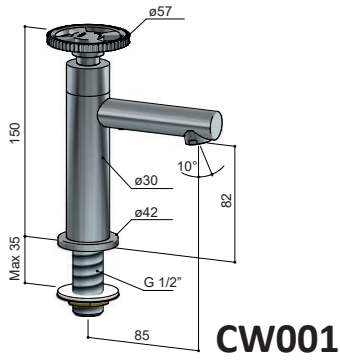


MAINTENANCE



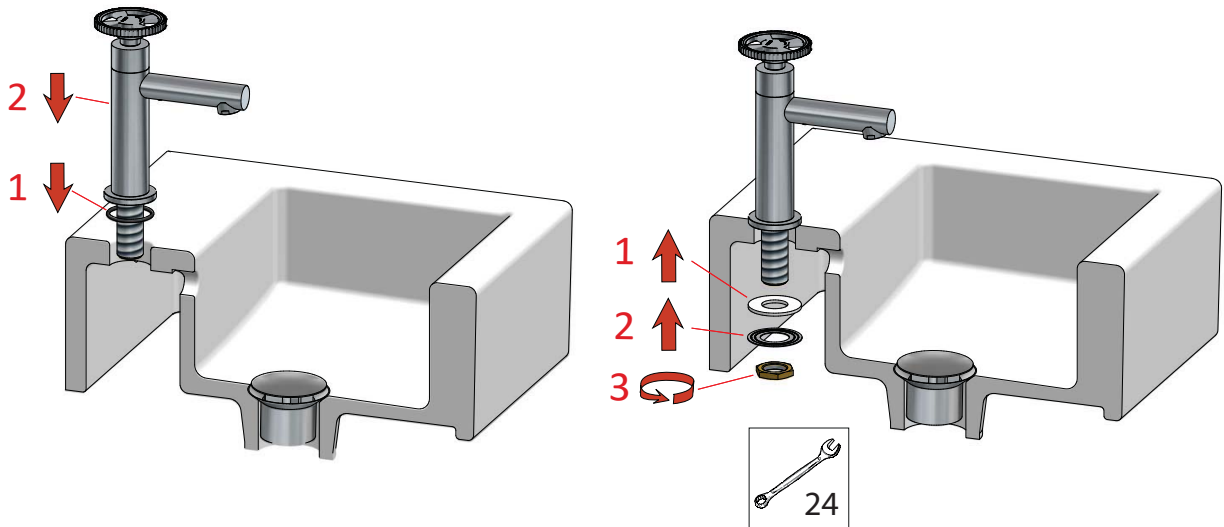
	MAX TIGHTENING TORQUE 30 Nm



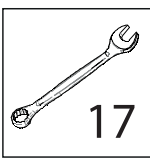
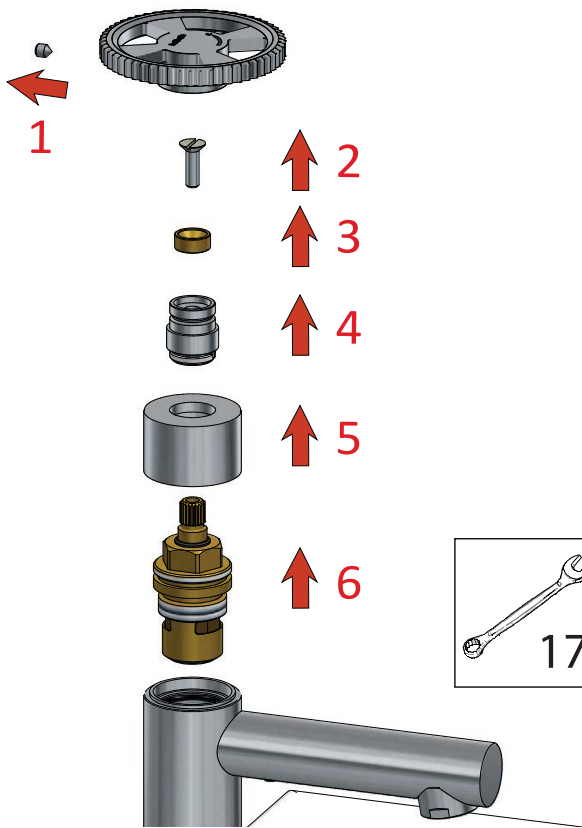


CW001

INSTALLATION

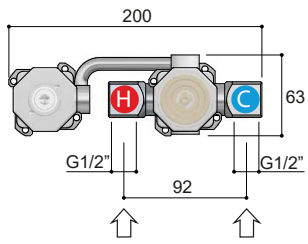


MAINTENANCE

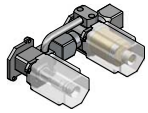


MAX TIGHTENING TORQUE
30 Nm

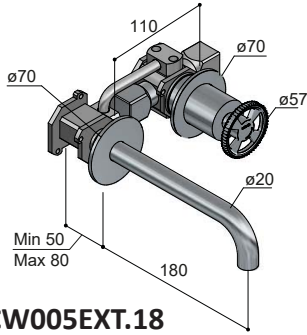




HB.CW005



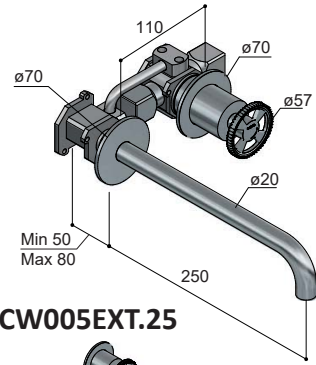
CW005-18



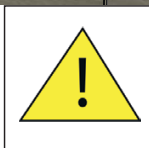
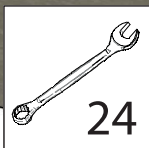
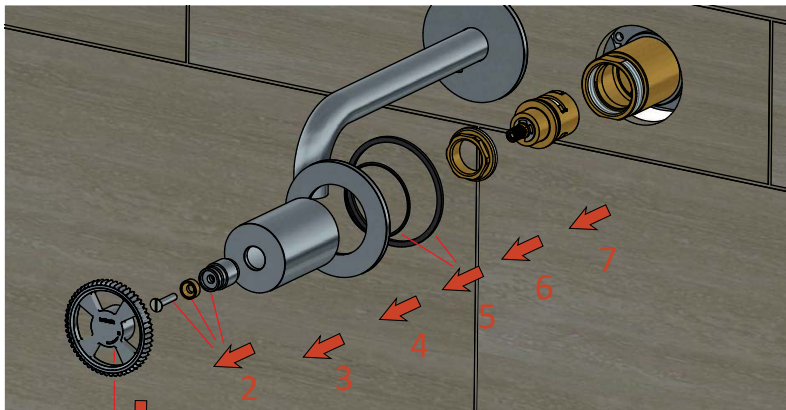
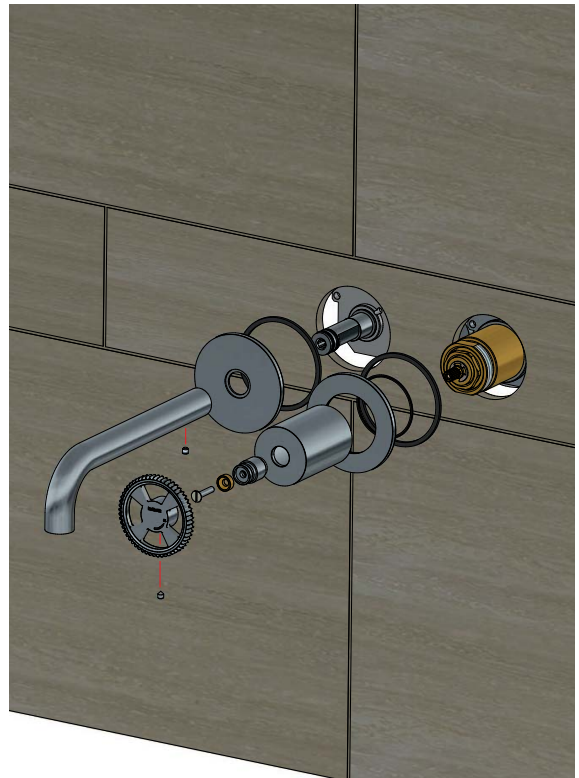
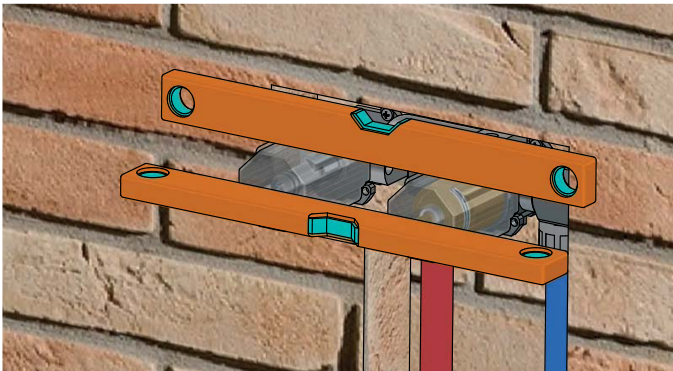
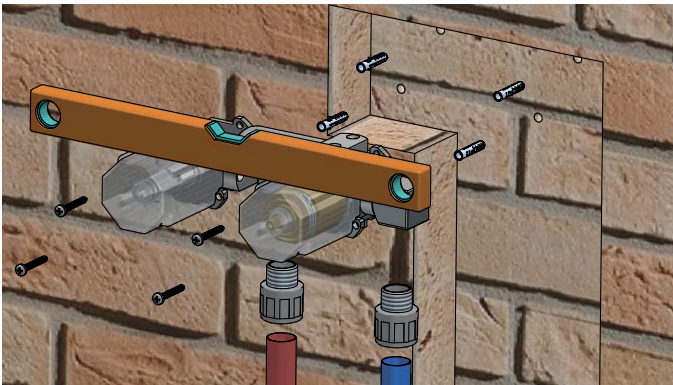
CW005EXT.18



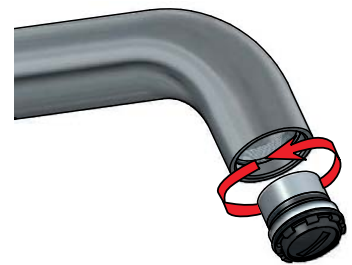
CW005-25



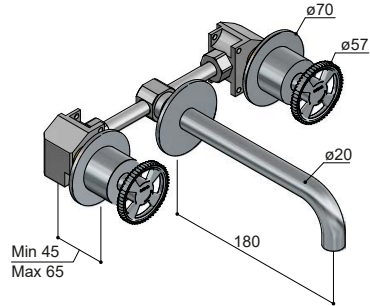
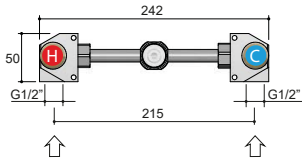
CW005EXT.25



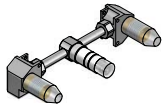
MAX TIGHTENING TORQUE
30 Nm



CW005T-18



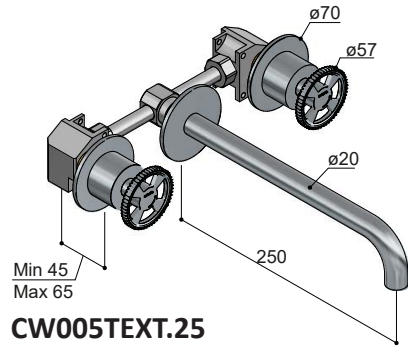
HB.CW005T



CW005TEXT.18



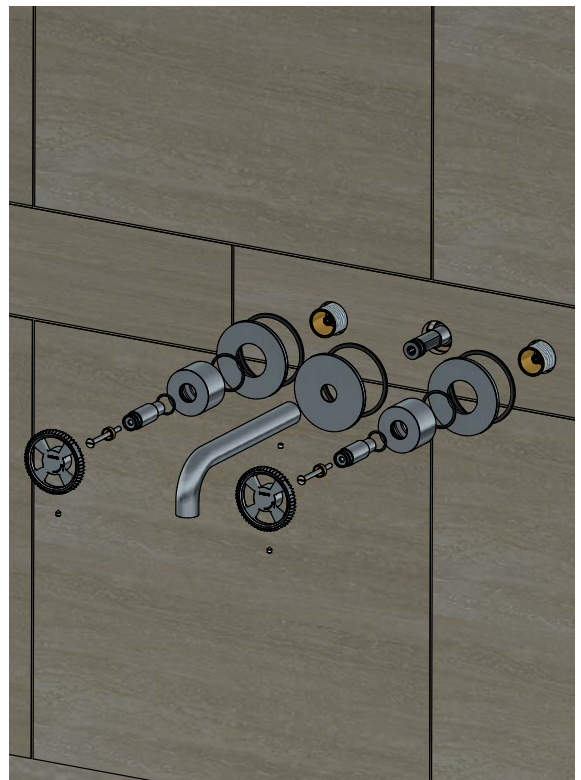
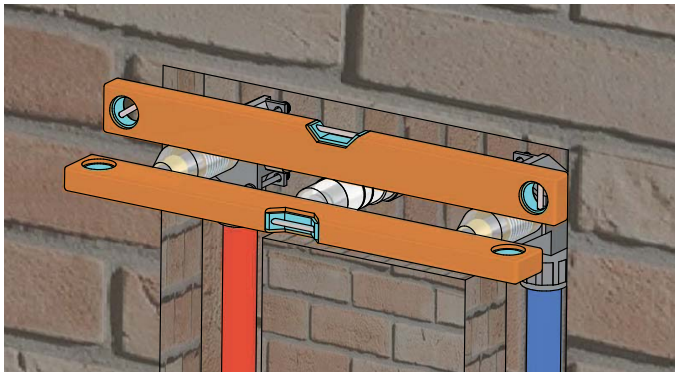
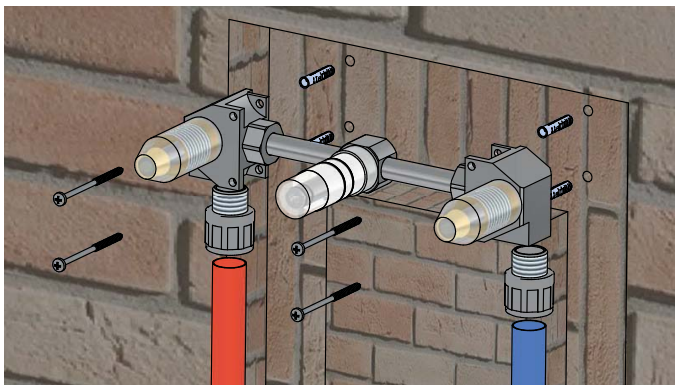
CW005T-25



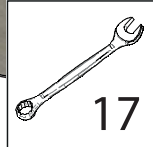
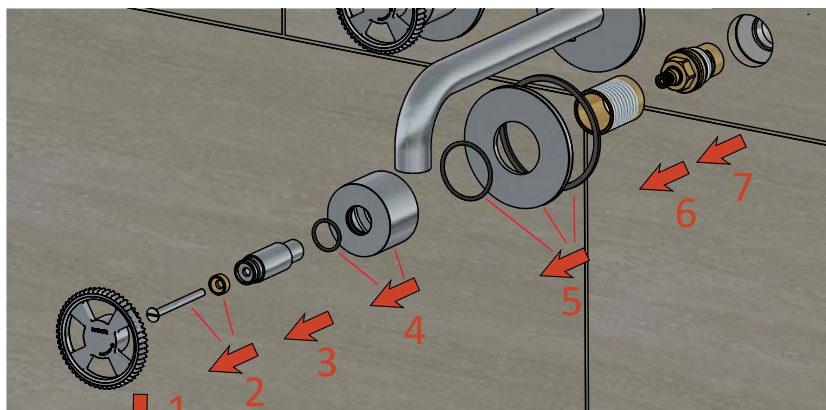
CW005TEXT.25



INSTALLATION



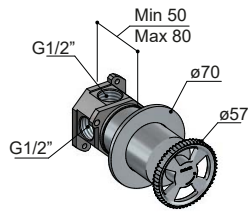
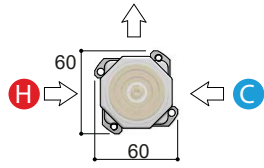
MAINTENANCE



MAX TIGHTENING TORQUE
30 Nm



CW031



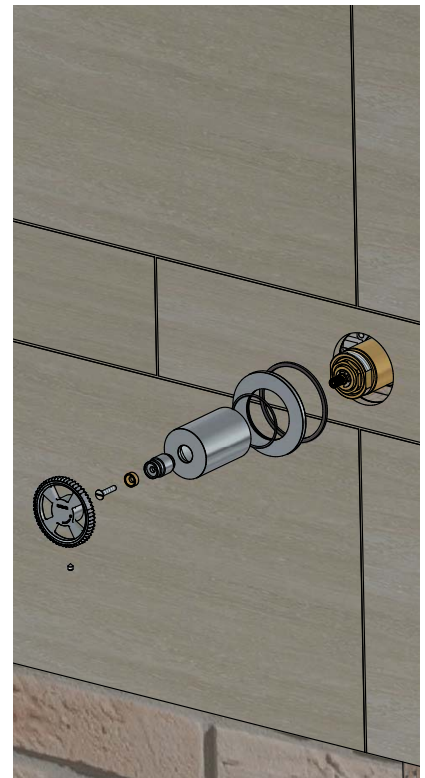
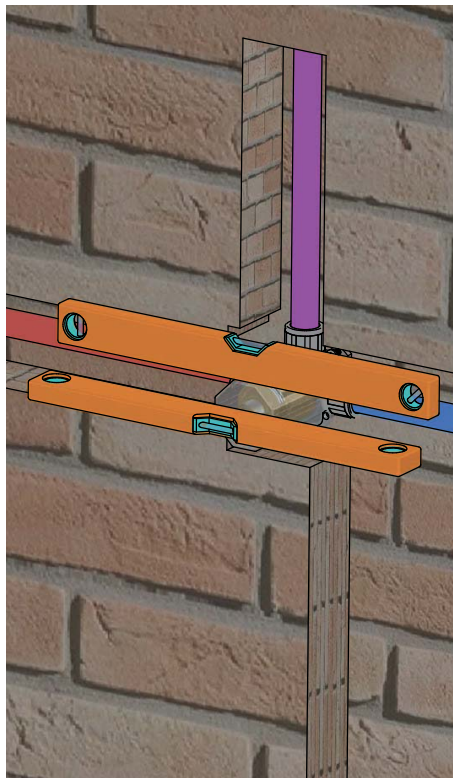
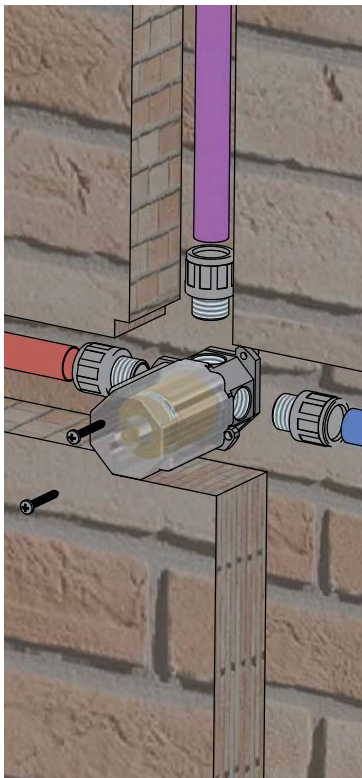
HB.CW031



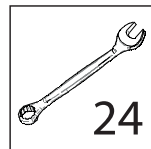
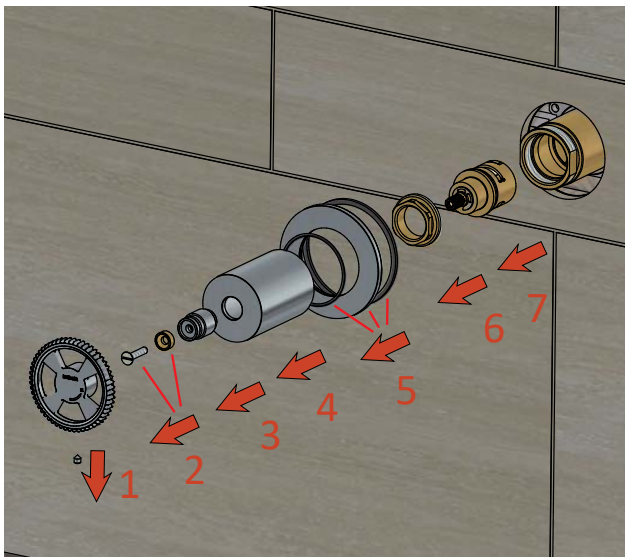
CW031EXT



INSTALLATION

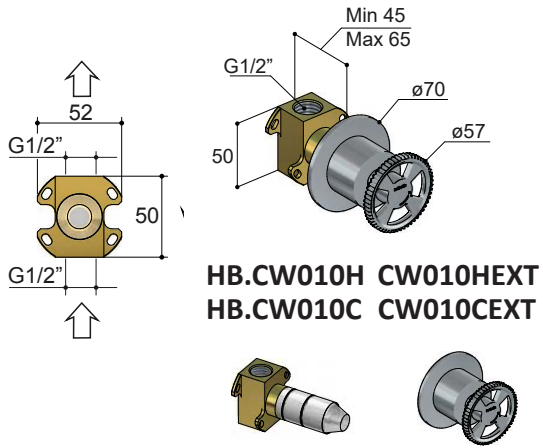


MAINTENANCE

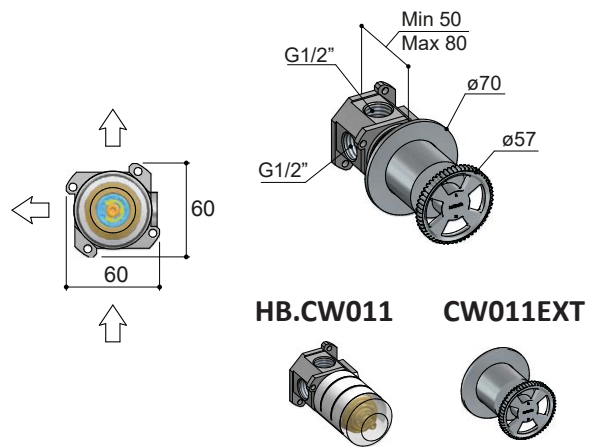


MAX TIGHTENING
TORQUE
30 Nm

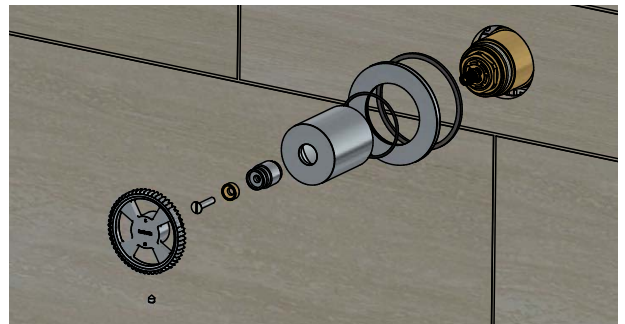
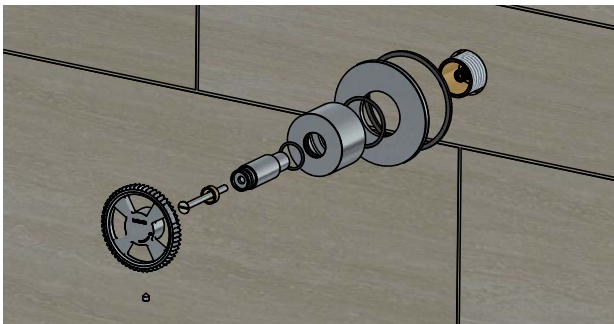
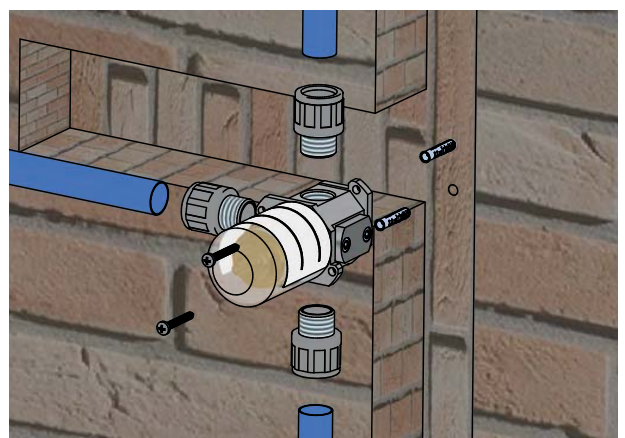
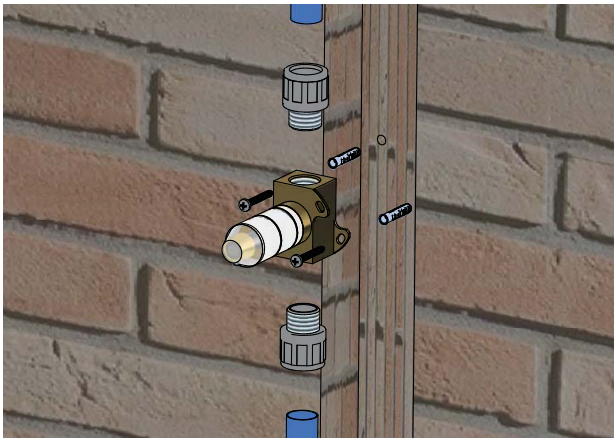
CW010H - CW010C



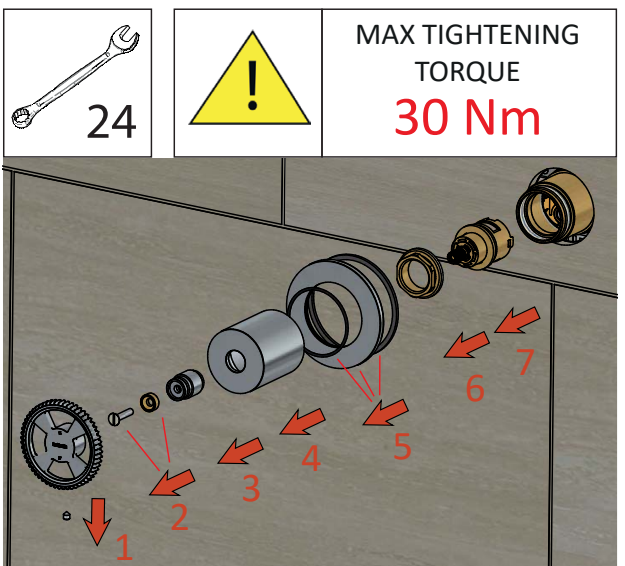
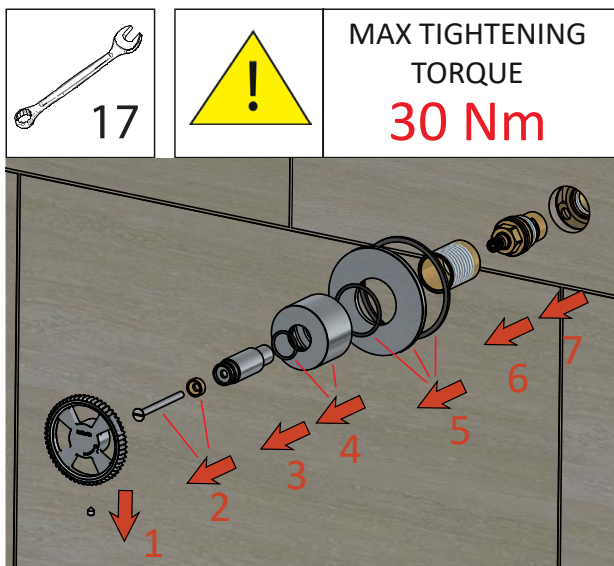
CW011

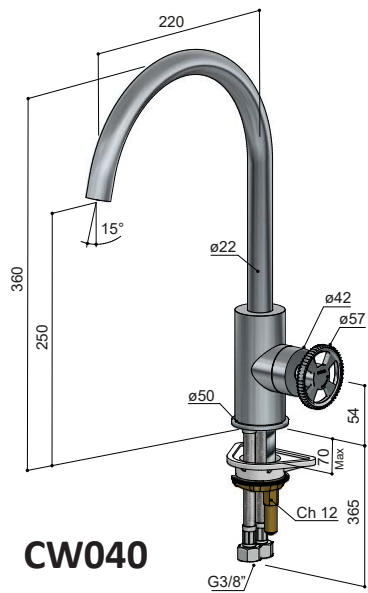


INSTALLATION

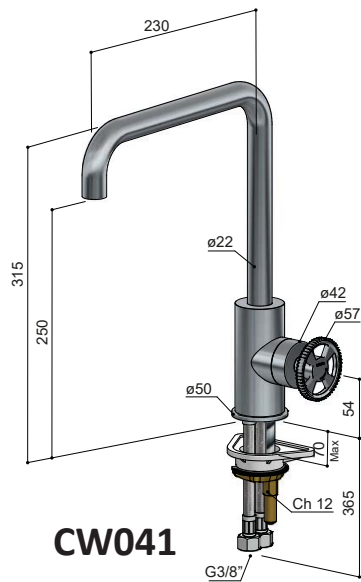


MAINTENANCE



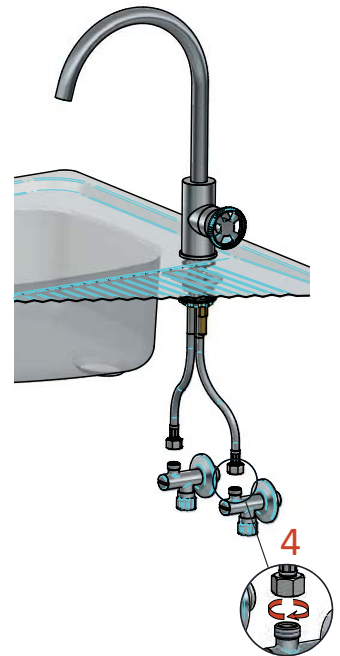
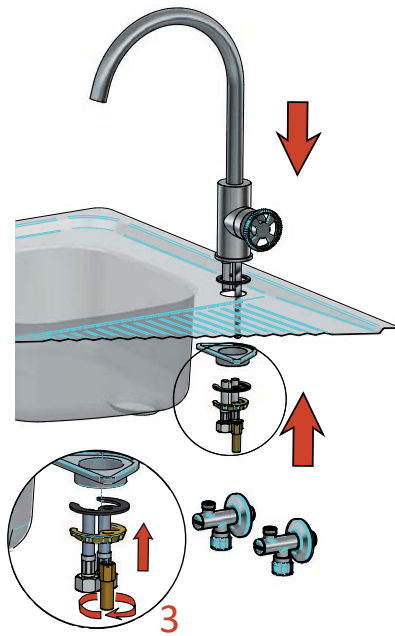
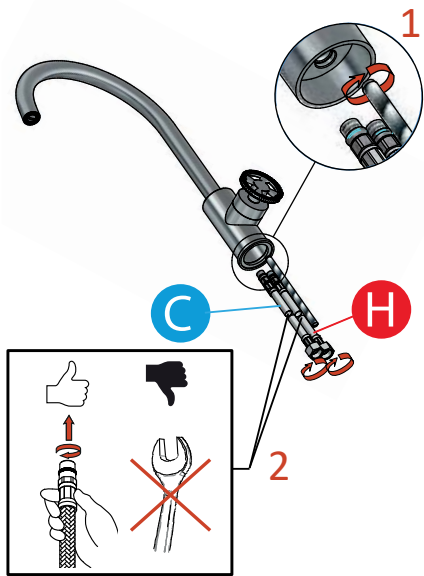


CW040

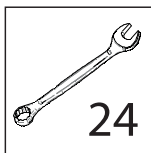


CW041

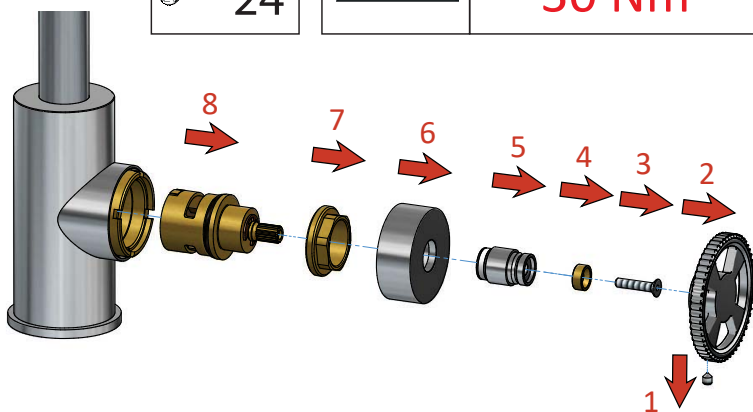
INSTALLATION

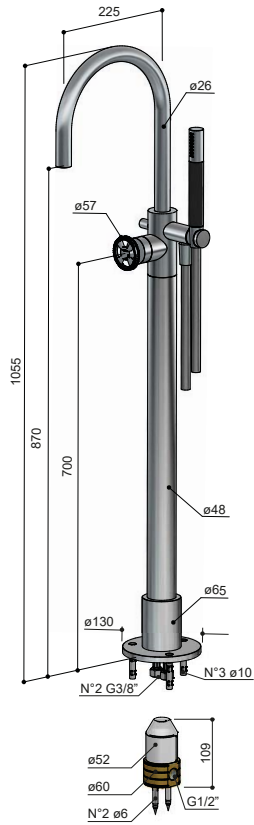


MAINTENANCE

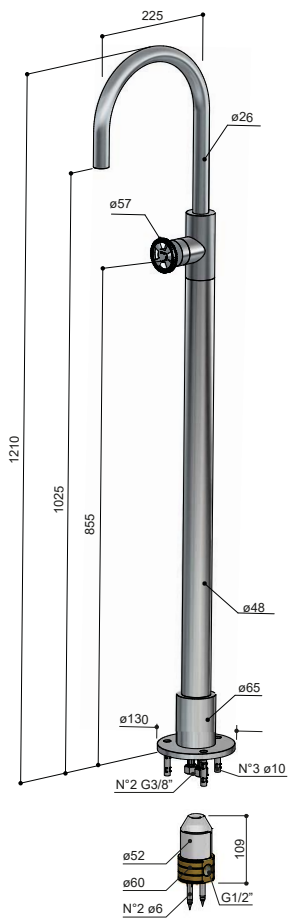


MAX TIGHTENING
TORQUE
30 Nm

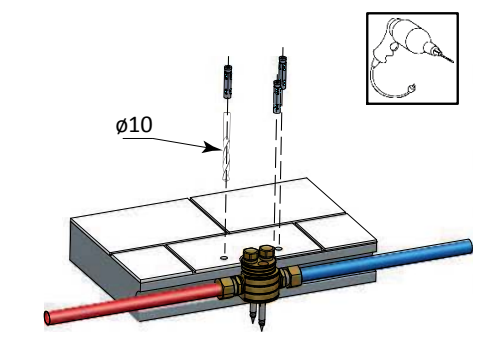
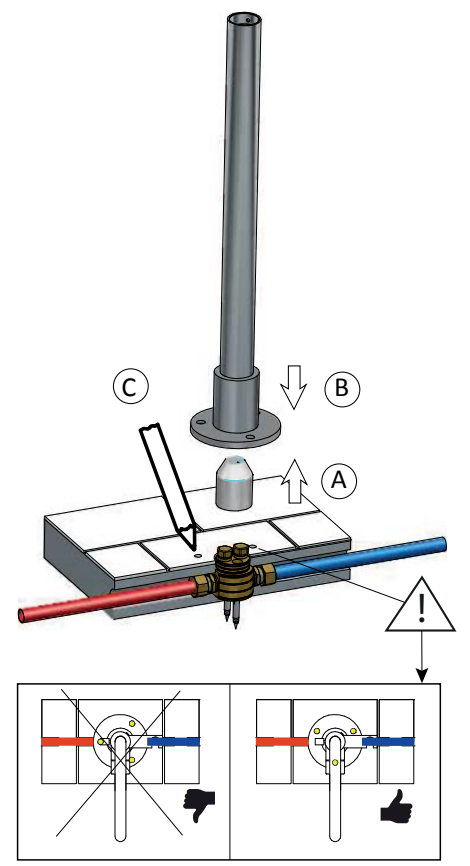
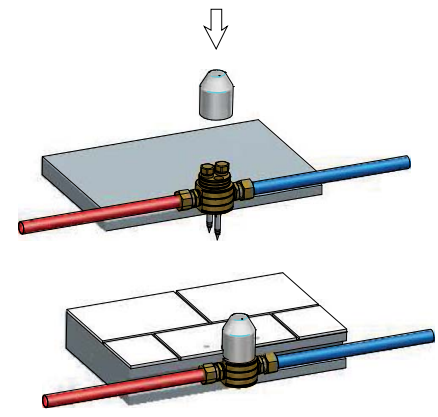
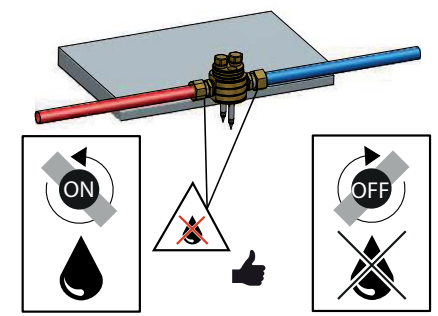
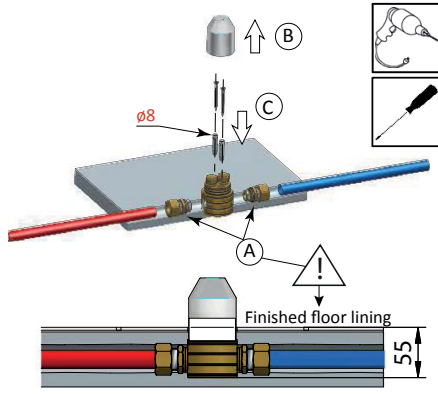




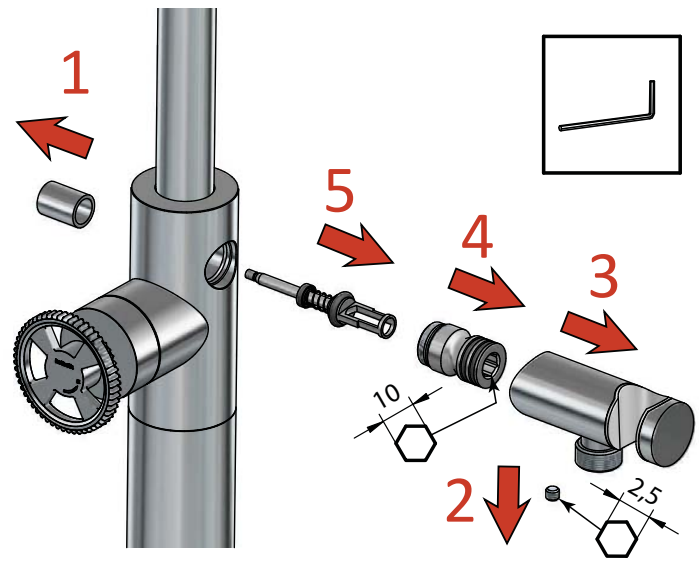
CW077



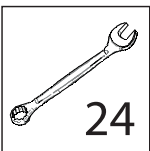
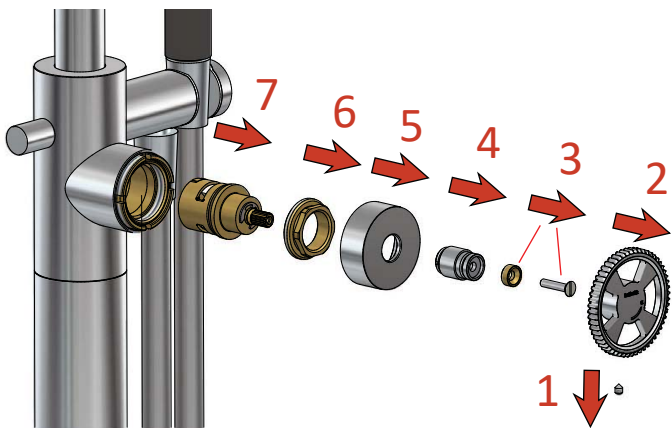
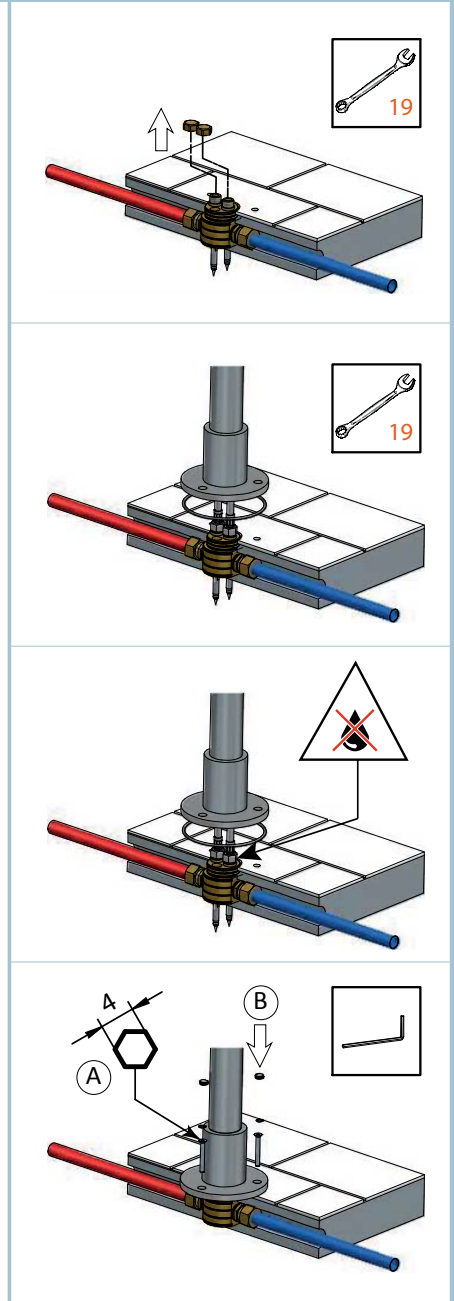
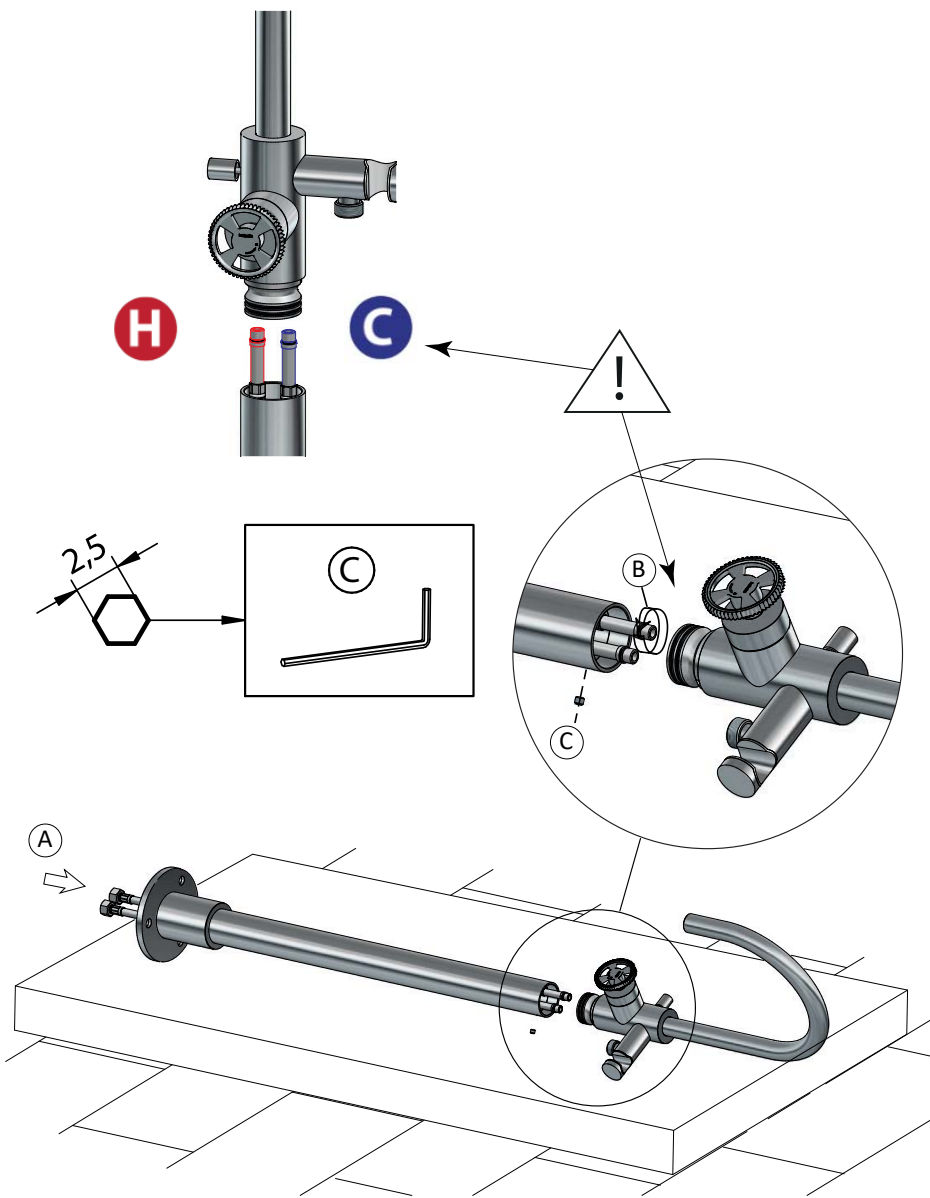
CW078W



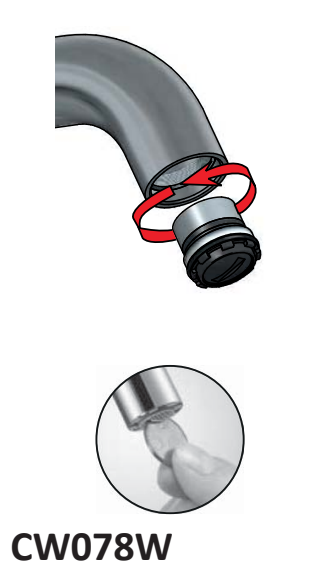
MAINTENANCE

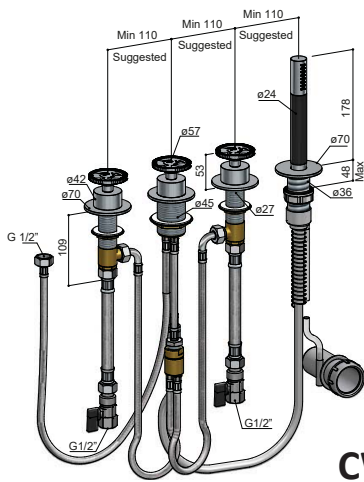


INSTALLATION

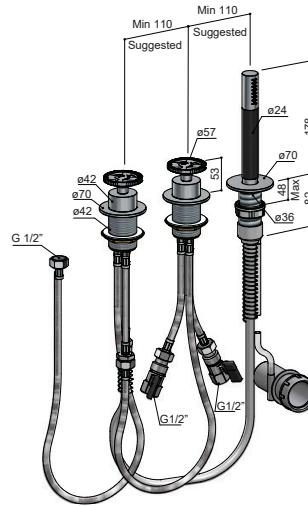


MAX TIGHTENING TORQUE
30 Nm



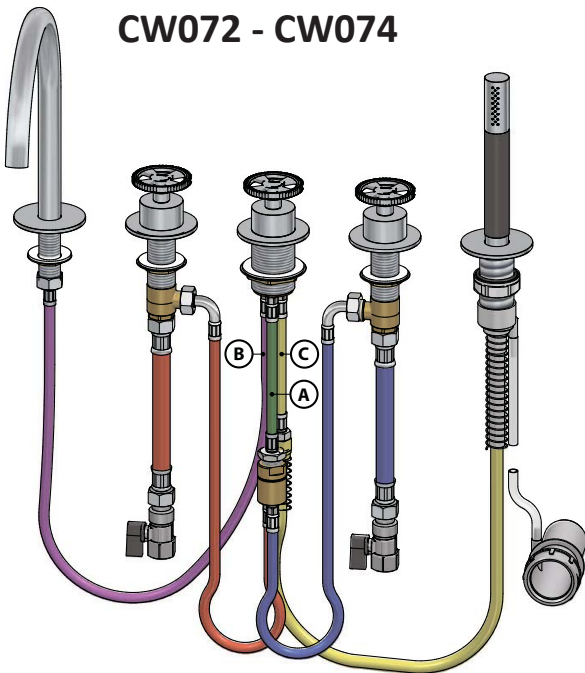


CW074

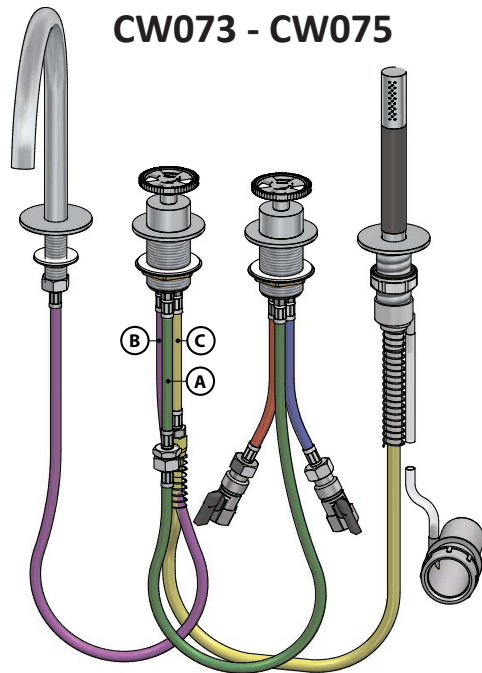


CW075

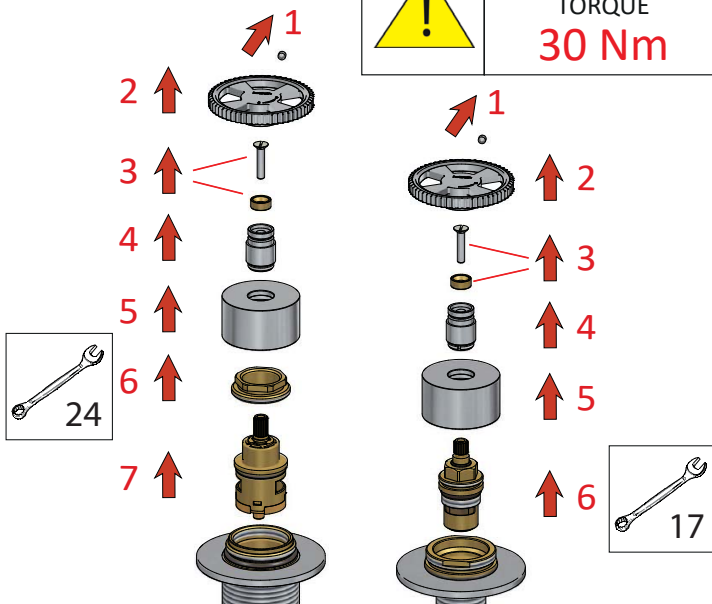
CW072 - CW074



CW073 - CW075



MAX TIGHTENING TORQUE
30 Nm



(A)
INLET - ENTRATA
ENTRÉE - EINLAß

(B)
SPOUT OUTLET - USCITA PER BOCCA
SORTIE POUR BEC - AUSLAß FÜR AUSLAUF

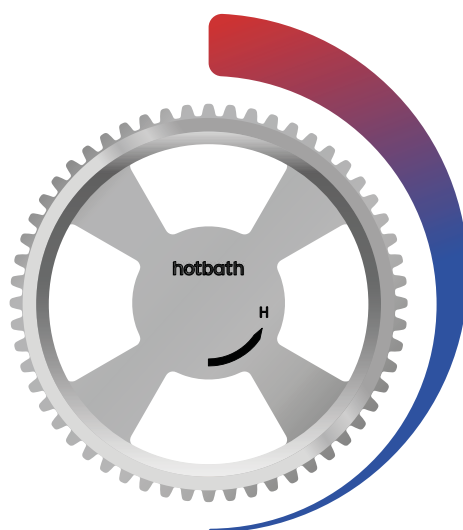
(C)
HAND SHOWER OUTLET - USCITA PER DOCCETTA
SORTIE POUR DOUCHETTE - AUSLAß FÜR HANDBRAUSE



PROGRESSIVE CERAMIC CARTRIDGE

Installed on articles:

CW003C, CW003MC, CW003HC, CW004, CW005-18, CW005-25, CW018, CW023, CW031, CW040, CW041, CW073, CW075, CW077, CW078W.



— Click :
start hot water

CLEANING / PULIZIA / NETTOYAGE / REINIGUNG

	✓			✗		WARNING
CR CHROME	WATER ✓	LIQUID SOAP ✓	SMOOTH CLOTH ✓	ABRASIVE SPONGE ✗	ACID/ABRASIVE DETERGENT ✗	Inoxidizable plated finish Finitura placcata inossidabile Finition plaquée inoxydable Inoxidierbare plattierte Ausführung
GN BRUSHED NICKEL	WATER ✓	LIQUID SOAP ✓	SMOOTH CLOTH ✓	ABRASIVE SPONGE ✗	ACID/ABRASIVE DETERGENT ✗	Inoxidizable plated finish Finitura placcata inossidabile Finition plaquée inoxydable Inoxidierbare plattierte Ausführung
BL MATT BLACK	WATER ✓	LIQUID SOAP ✓	SMOOTH CLOTH ✓	ABRASIVE SPONGE ✗	ACID/ABRASIVE DETERGENT ✗	Varnished finish: subject to scratches if not properly handled Finitura verniciata: soggetta a deterioramento se non trattata correttamente Finition vernie: sujette aux rayures si ne pas traitée correctement Lackierte Ausführung: Kratzer bei unsachgemäßer Behandlung
BBP BRUSHED BRASS PVD	WATER ✓	LIQUID SOAP ✓	SMOOTH CLOTH ✓	ABRASIVE SPONGE ✗	ACID/ABRASIVE DETERGENT ✗	Inoxidizable PVD finish Finitura inossidabile in PVD Finition PVD inoxydable Inoxidierbare PVD-Ausführung

MAINTENANCE - Never use for any reason cleaning solutions containing abrasive substances, chloric acids, ammonia, vinegar, bleach, domestic acids, disinfectants, or any type of abrasive pad.
Warning! Incorrect cleaning may permanently ruin the surface of the products and in such case the manufacturer may not be held liable for damage.

MANUTENZIONE - Non usare mai per qualsiasi motivo soluzioni detergenti contenenti sostanze abrasive, acido clorico, ammoniaca, aceto, candeggina, acidi domestici, disinfettanti o qualsiasi tipo di spugna o panno abrasivo.
Attenzione! Una pulizia errata può rovinare in modo permanente la superficie dei prodotti e in tal caso il Produttore non può essere ritenuto responsabile per danni.

ENTRETIEN - N'utilisez jamais des solutions de nettoyage contenant substances abrasives, acide chlorique, ammoniacque, vinaigre, eau de javel, acides domestiques, désinfectants ou tout type de tissu abrasif.
Attention! Un nettoyage incorrect peut endommager de manière permanente la surface des produits et, dans ce cas, le Fabricant ne pourra être tenu responsable des dommages.

WARTUNG - Verwenden Sie niemals Reinigungslösungen, die Schleifmittel, Chlorsäure, Ammoniak, Essig, Bleichmittel, Haushaltssäuren, Desinfektionsmittel oder andere Arten von Schleifmitteln enthalten.
Warnung! Durch eine falsche Reinigung kann die Oberfläche der Produkte dauerhaft beschädigt werden. In diesem Fall ist der Hersteller nicht für Schäden haftbar.